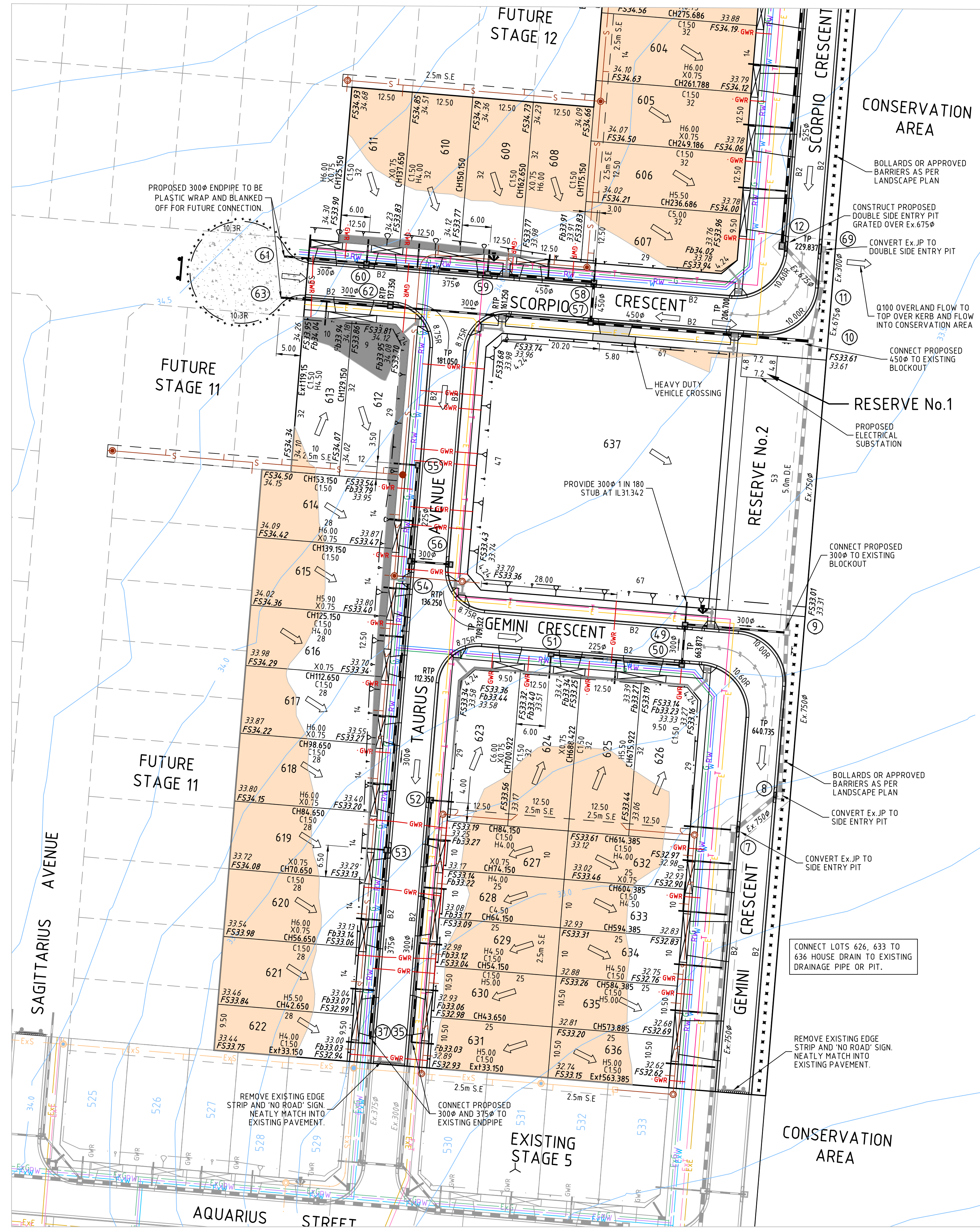
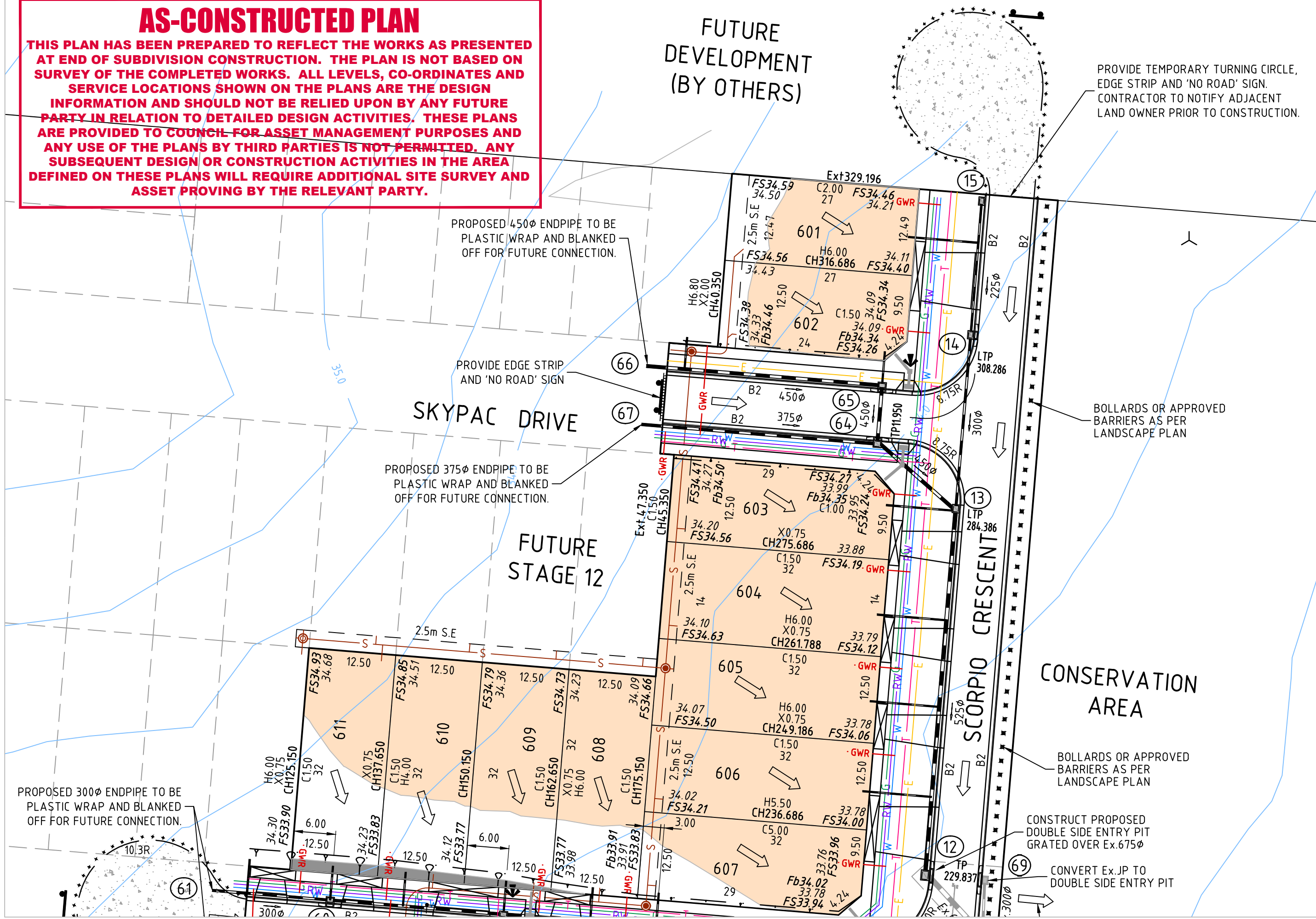


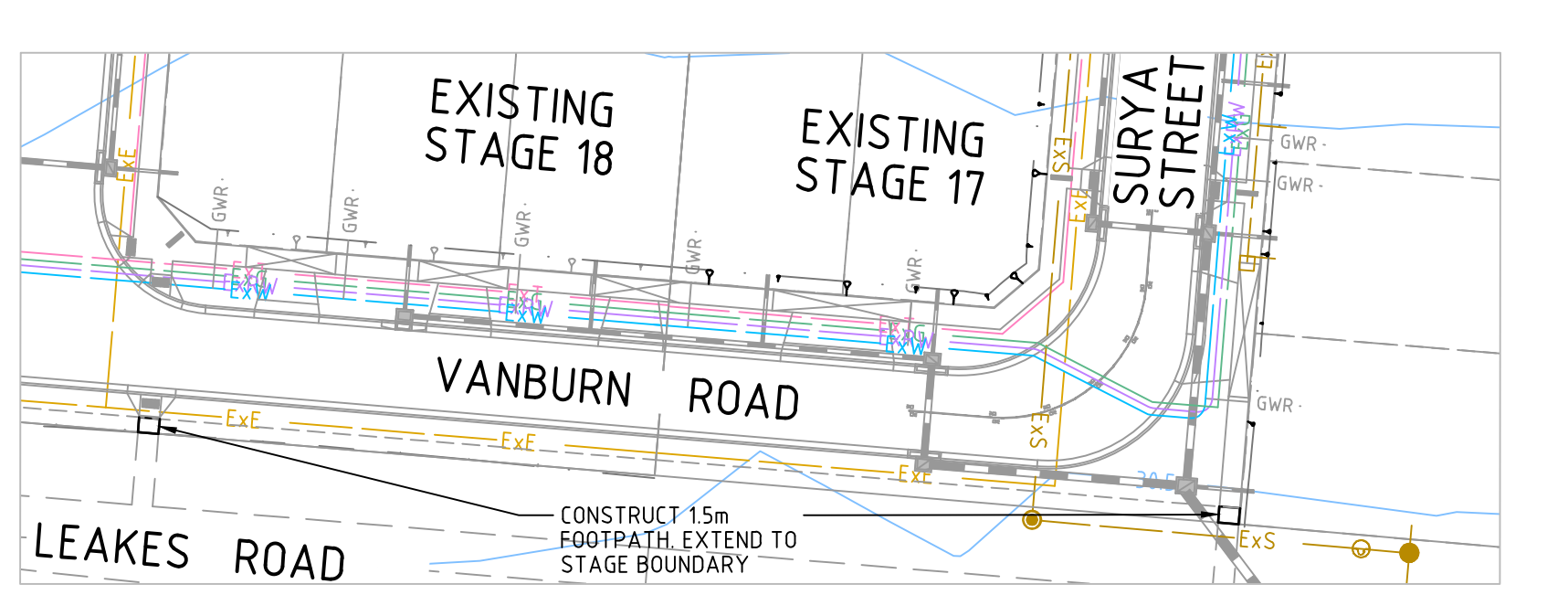
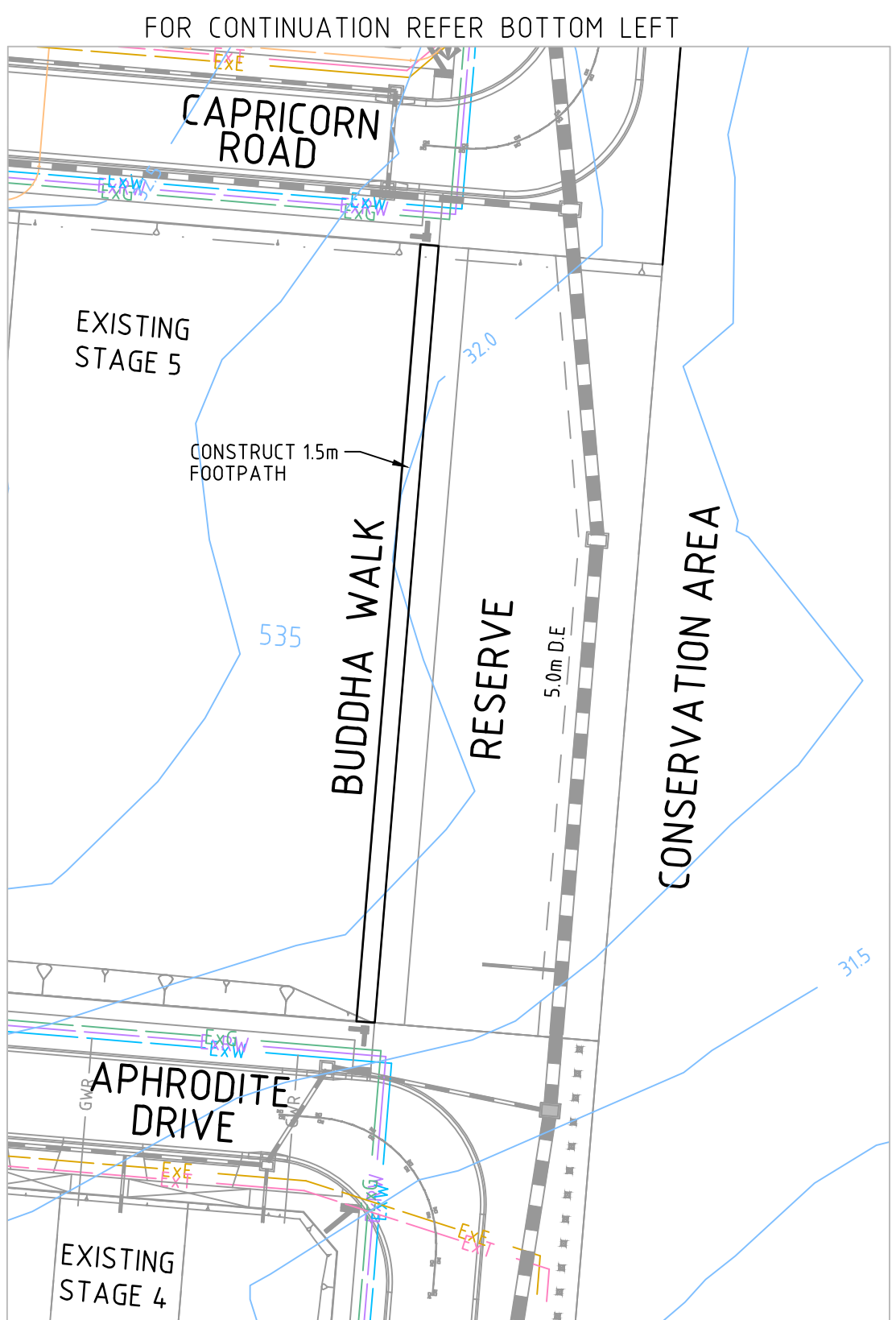
FOR CONTINUATION REFER BOTTOM RIGHT



**AS-CONSTRUCTED PLAN**  
 THIS PLAN HAS BEEN PREPARED TO REFLECT THE WORKS AS PRESENTED AT END OF SUBDIVISION CONSTRUCTION. THE PLAN IS NOT BASED ON SURVEY OF THE COMPLETED WORKS. ALL LEVELS, CO-ORDINATES AND SERVICE LOCATIONS SHOWN ON THE PLANS ARE THE DESIGN INFORMATION AND SHOULD NOT BE RELIED UPON BY ANY FUTURE PARTY IN RELATION TO DETAILED DESIGN ACTIVITIES. THESE PLANS ARE PROVIDED TO COUNCIL FOR ASSET MANAGEMENT PURPOSES AND ANY USE OF THE PLANS BY THIRD PARTIES IS NOT PERMITTED. ANY SUBSEQUENT DESIGN OR CONSTRUCTION ACTIVITIES IN THE AREA DEFINED ON THESE PLANS WILL REQUIRE ADDITIONAL SITE SURVEY AND ASSET PROVING BY THE RELEVANT PARTY.



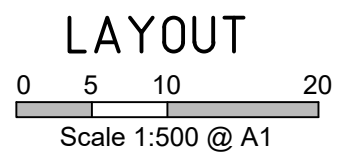
FOR CONTINUATION REFER TOP LEFT



INSET

- LEGEND**
- CUT EARTHWORKS - CUT AREA WITHIN LOTS GREATER THAN 150mm DEPTH
  - FILL EARTHWORKS - FILL AREA WITHIN LOTS GREATER THAN 150mm DEPTH
  - B2 600mm WIDE B2 TYPE BARRIER KERB & CHANNEL AS PER EDCM 301
  - ES 150x150mm CONC. EDGE STRIP WITH SUBSOIL DRAINS UNDER.
  - TEMPORARY TURNING AREA. 200mm DEPTH OF CLASS 3 FCR WITH BOLLARDS AT 1.5m SPACING.
  - PROPOSED 200mm DEPTH CL 3 (NOM.20mm) FCR PAVEMENT, BATTER TO SURFACE @ 1% AT EDGES & ACHIEVE FREE DRAINING SURFACE.
  - BATTER / RIDGE RIDGE LINE
  - PROPOSED GAS & WATER/RECYCLED WATER CONDUITS
  - EXISTING SURFACE CONTOURS (0.25m INT.)
  - BOLLARDS AS INDICATED.
  - DIRECTION OF LOT FINISHED SURFACE FALL
  - HEAVY DUTY VEHICLE CROSSING AS PER EDCM 503 AND WYNDHAM CITY COUNCIL STD DWG SD4-5

**WARNING**  
 BEWARE OF UNDERGROUND SERVICES  
 THE LOCATIONS OF UNDERGROUND SERVICES ARE APPROXIMATE ONLY AND THEIR EXACT POSITION SHOULD BE PROVEN ON SITE. NO GUARANTEE IS GIVEN THAT ALL EXISTING SERVICES ARE SHOWN.



LAYOUT

H:\22562\STAGE-6\CAD\DWG\SET\ROAD AND DRAINAGE\22562\_6R2\_6R10\_6R11.DWG

THIS DRAWING IS NOT TO BE COPIED OR SCALED

VERSION	REMARKS	DATE	BY
S	AS CONSTRUCTED	15.01.20	JC
P	REGRADE SCORPIO CR TO MATCH AT BDRY INTERFACE	06.12.19	JC
R	PIPE LINE 14-67 REMOVED	14.10.19	JC
O	AMENDED GWR CONDUIT AND REMOVED HEAVY DUTY DRIVEWAY	08.08.19	JC
N	ADDED FOOTPATH FOR STAGE 17 & 18	24.07.19	JC

**LEGEND**

	DRAIN, WATER INLET & PIT		GAS & WATER CONDUIT
	RECYCLED WATER		RECYCLED WATER
	SEWER AND MAINTENANCE HOLE		ELECTRICAL U.G. SERVICES
	EX SEWER AND MAINTENANCE HOLE		ELECTRICAL SERVICE & PIT
	WATER MAIN		ELECTRICAL ASSETS
	EX WATER MAIN, VALVE & HYDRANT		EX ELECTRICITY OVERHEAD
	EX GAS MAIN, VALVE		EASEMENT LINE
	TELSTRA SERVICES & PITS		TOP OF BATTER
	EX TELSTRA SERVICES & PITS		TOE OF BATTER
	FENCE		LOT FALL

	FINISHED SURFACE AFTER CUTTING OR FILLING
	TOP OF PROPOSED BATTER
	PROPOSED PAVEMENT OR FOOTPATH SURFACE
	EXISTING OR PROPOSED INVERT LEVEL OF PIPE
	TANGENT POINT
	CHAINAGE
	PSM
	STREET SIGN

DRAWN BY	N.KASHA	DESIGNED BY	L.PHAN
MELWAY	203 D1	CHECKED BY	R.HALFORD
DATUM	AHD	AUTHORISED BY	R.BREWSTER

**REEDS CONSULTING**

LAND SURVEYING  
 CIVIL ENGINEERING  
 PLANNING  
 DEVELOPMENT CONSULTING

www.reedsconsulting.com.au  
 engineering@reedsconsulting.com.au

Lvl 6, 440 Elizabeth Street Melbourne Victoria 3000  
 p 03 8660 3000

WYNDHAM CITY COUNCIL		DRAWING No.	6R2	VERSION	S
80 WOODS ROAD, TRUGANINA		REFERENCE	22562E/6		
STAGES 6		SHEET	2 OF 15		
LAYOUT PLAN					